

RFP-0313 BOOKSTORE FOOTPRINT (AutoCad files are not available.)

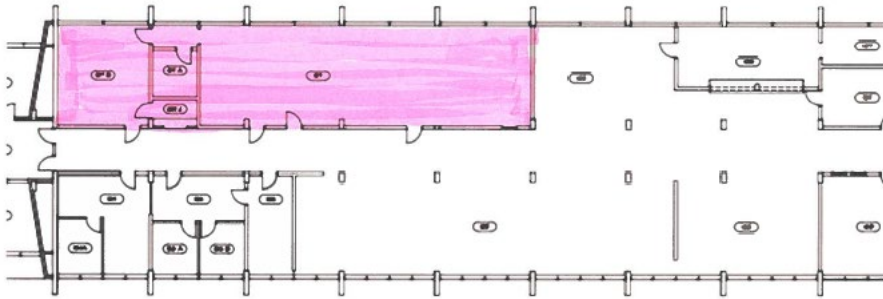
<p>ASHLAND CTC College Drive Campus 2904 square foot. Technology Drive Campus 2977 square foot. *Floorplan attached</p>
<p>BLUEGRASS CTC Newtown / Den (Using these spaces): 131B Bookstore Storage, 131A Bookstore Office, 131 Bookstore, 130 Commons Approx. 2023 s.f. (No Floorplan provided)</p>
<p>BLUEGRASS CTC - Leestown 2,940 SF for the Leestown Bookstore. *Floorplan attached</p>
<p>BIG SANDY CTC (Prestonsburg) *The Martin Student Center Building, rooms 107, 107A, 107C, 107D, & 107E total 2187 square feet. *Floorplan attached</p>
<p>ELIZABETHTOWN CTC 3482 square feet confirmed. *Floorplan attached</p>
<p>GATEWAY CTC – Boone Campus 3,194 square feet. *Floorplan attached</p>
<p>HAZARD CTC 3,359 square feet. *Floorplan attached.</p>
<p>HENDERSON CC Estimated 2,097 square feet. Currently using space in the A/T building on the 1st floor. Using rooms 110, 110A, and 110B. *Floorplan attached</p>
<p>HOPKINSVILLE CC Ft Campbell is 120. The Hopkinsville campus is 3807 sq. ft., and this space is currently under construction. The footage will be reduced. (No Floorplan provided)</p>
<p>JEFFERSON CTC (Louisville) Jefferson occupies 9,090 sq/ft of space in a leased facility for its Downtown Campus bookstore. *Floorplan attached</p>
<p>MADISONVILLE CC 4 areas est. 3,359 square feet. *Floorplan attached.</p>
<p>MAYSVILLE CTC Rowan Bookstore *Floorplan attached</p>
<p>OWENSBORO CTC 2,543 sq ft merchandising space and 81 sq ft for Manager Office for 2624 sq ft. *Floor plan attached</p>
<p>SOMERSET CC</p> <ul style="list-style-type: none"> • Laurel North Bookstore includes rooms 246 (120 sq. ft.), 248 (254 sq. ft.), and 247/249 (1983 sq. ft.) in Building 2 (#1425). The total square footage 2357. • Somerset North Bookstore is in the Harold Rogers Building (#1415). It includes rooms 111 (2179 sq. ft.), 111A (127 sq. ft.), 111B (133 sq. ft.), 111C (654 sq. ft.), and 111E (144 sq. ft.) for a total of 3237 square feet.
<p>SOUTHCENTRAL KY CTC (Bowling Green) Main Campus Building H 1714.80 sq,ft, (No Floorplan provided)</p>
<p>SOUTHEAST KY CTC Cumberland Campus - 1,360 sq ft. The storage area behind the game room is estimated to be 288 sq ft. *Floor plan attached</p>
<p>WEST KY CTC BookStore 3144 SqFt BookStore Office 702 SqFt *Floor plan attached</p>

ASHLAND COMMUNITY & TECHNICAL COLLEGE

Technology Drive Campus 2977 square foot.



College Drive Campus 2904 square foot.



COLLEGE DRIVE CAMPUS

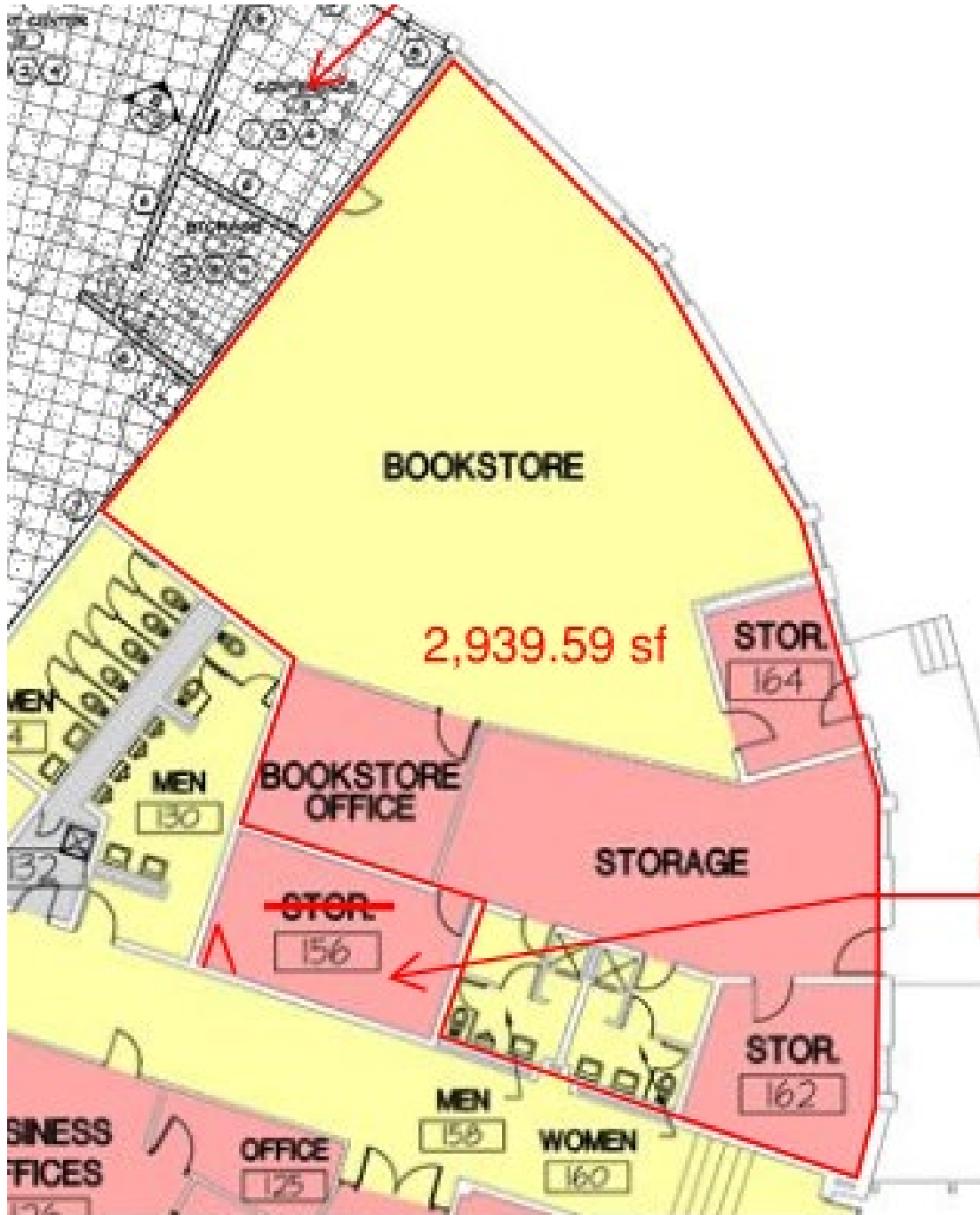
FIRST FLOOR PLAN

SCALE: 1/8" = 1'-0"

BLUEGRASS COMMUNITY & TECHNICAL COLLEGE

Leestown

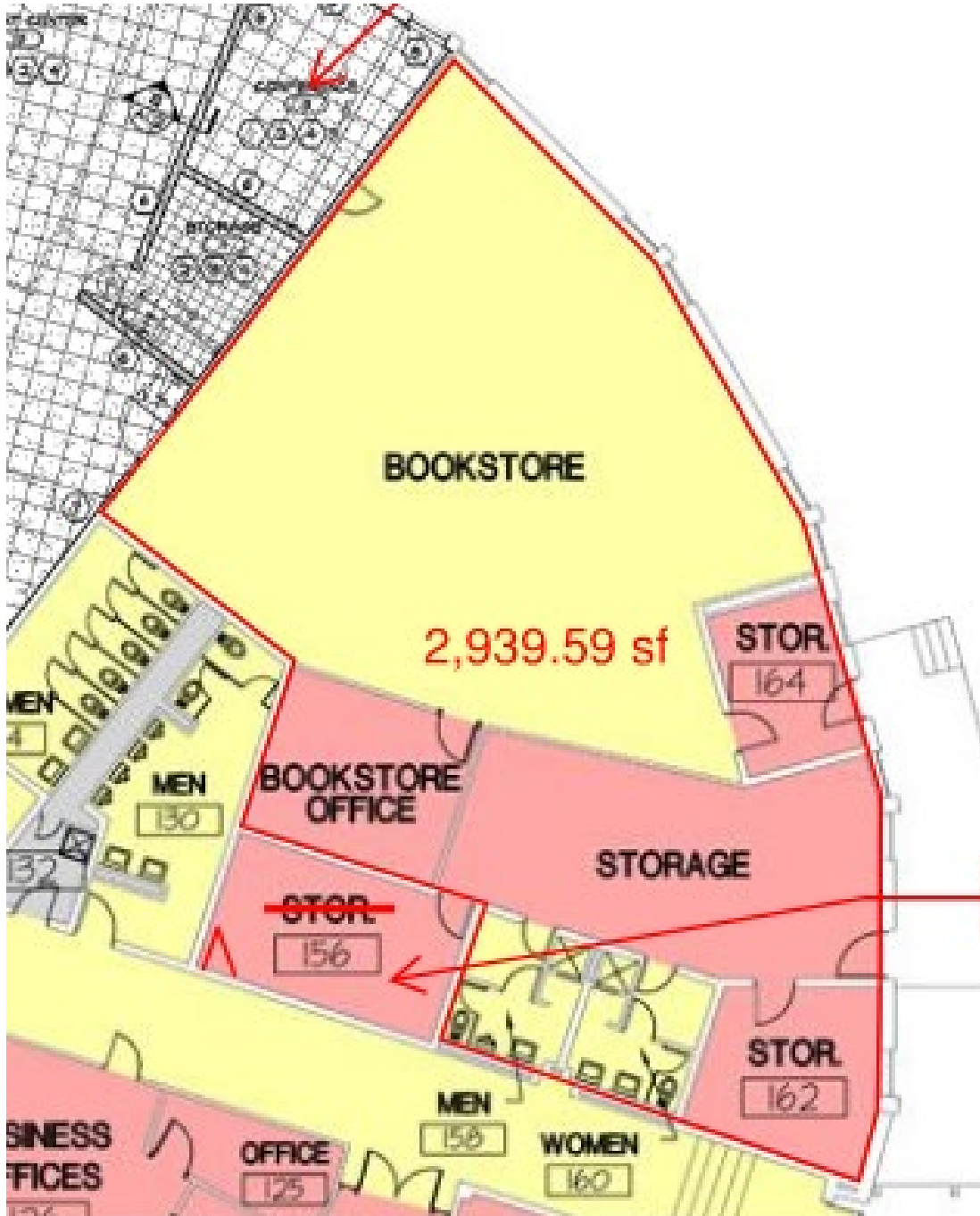
2,940 SF for the Leestown Bookstore.



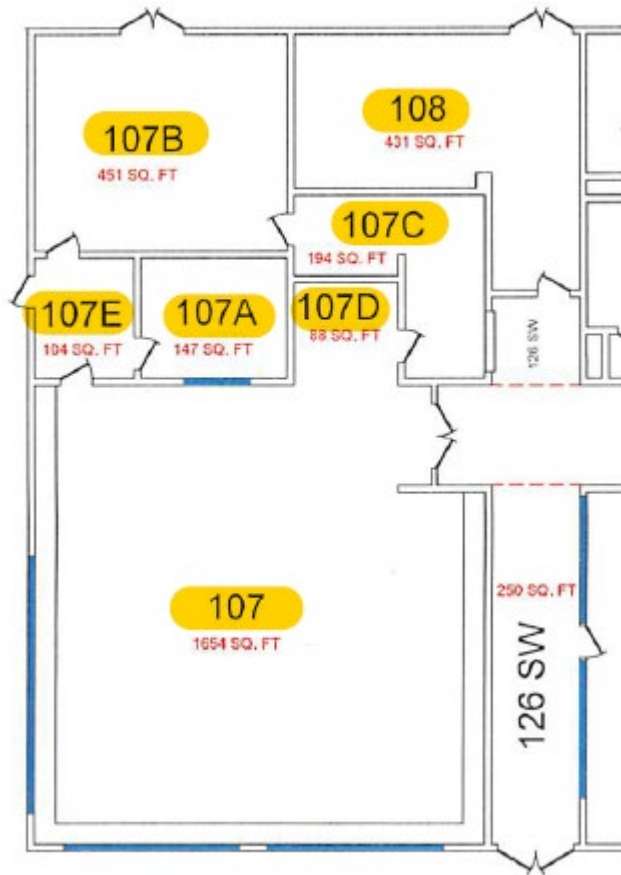
BLUEGRASS CTC

Leestown

2,940 SF for the Leestown Bookstore.



**BIG SANDY COMMUNITY & TECHNICAL COLLEGE
PRESTONSBURG CAMPUS
MARTIN STUDENT CENTER BUILDING - 1ST FLOOR**



2187 sq ft

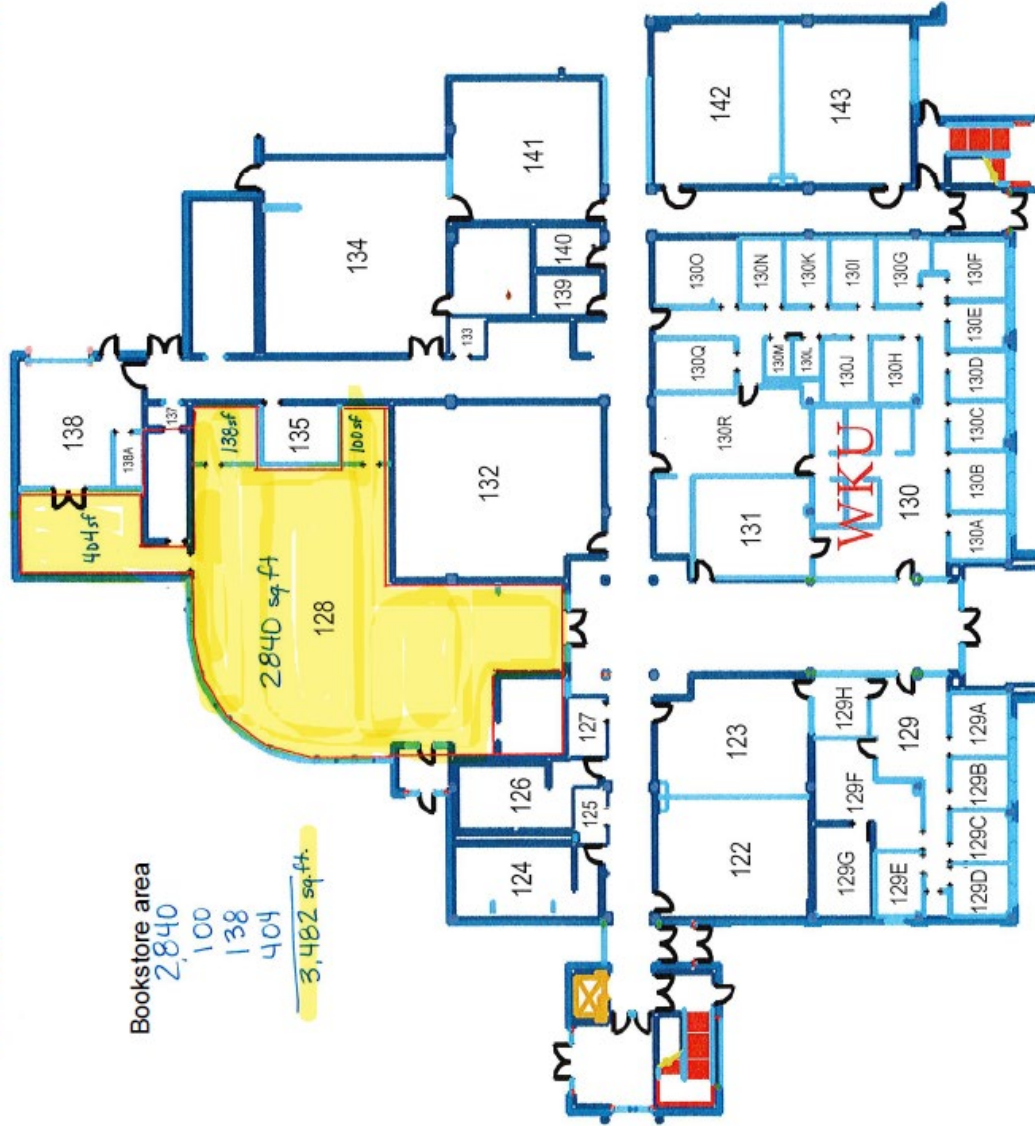
**PRESTONSBURG CAMPUS (BOMAR)
1304 MARTIN STUDENT CENTER BUILDING**

BUILDING	ROOM #	ROOM USE	SQ. FT.	NET ASSIGNABLE	
				SQ.FT.	NOT ASSIGNABLE
1304	00104D	Office	00	00	
1304	00104E	Office	100	100	
1304	00105	Storage	127	127	
1304	00106	Office / Advising Center	875	875	
1304	00107	Bookstore - Barnes & Noble	1,654	1,654	
1304	00107A	Office	147	147	
1304	00107B	Storage	451		451
1304	00107C	Office	194	194	
1304	00107D	Bookstore - Barnes & Noble	88	88	
1304	00107E	Storage	104	104	
1304	00108	Mechanical	431		431

ELIZABETHTOWN COMMUNITY & TECHNICAL COLLEGE
Regional Postsecondary Education Center

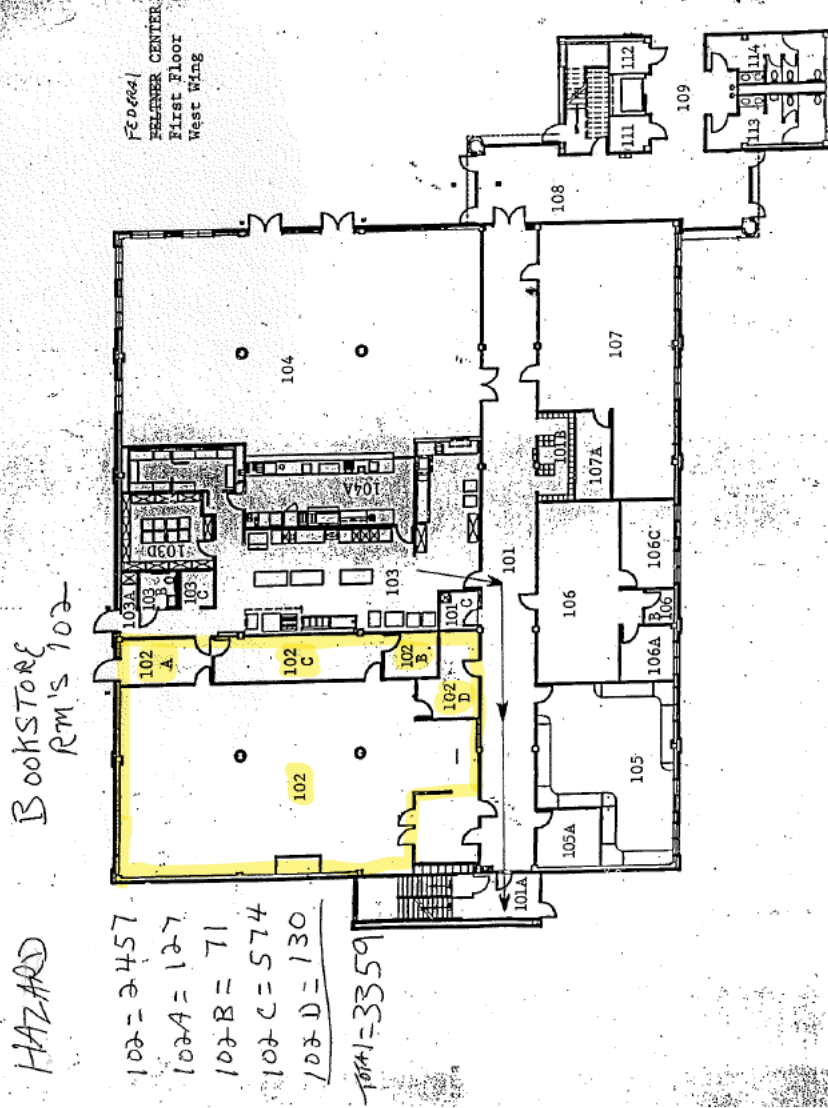
3482 square feet confirmed.

ELIZABETHTOWN COMMUNITY & TECHNICAL COLLEGE
Regional Postsecondary Education Center



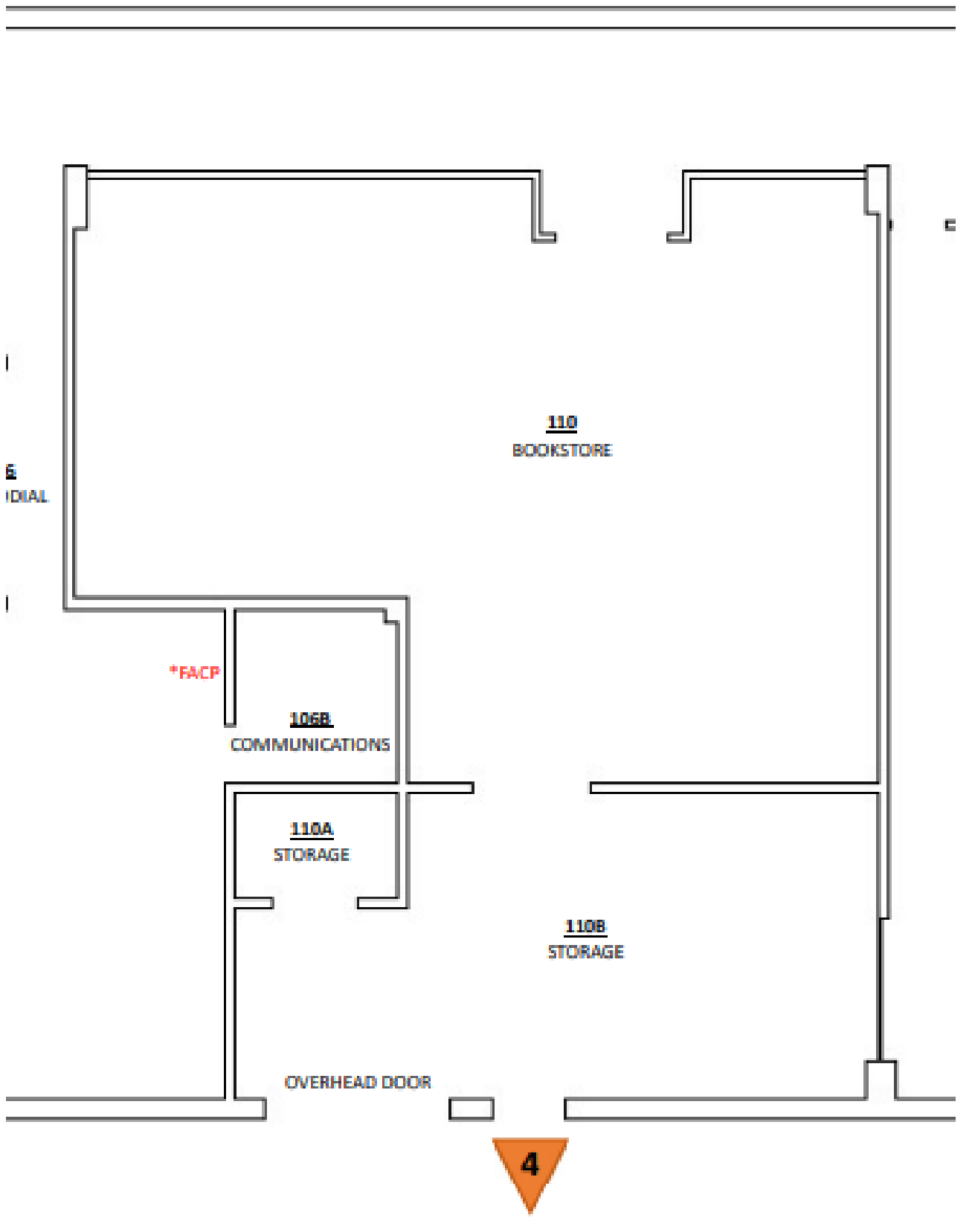
HAZARD COMMUNITY & TECHNICAL COLLEGE

3,359 square feet.



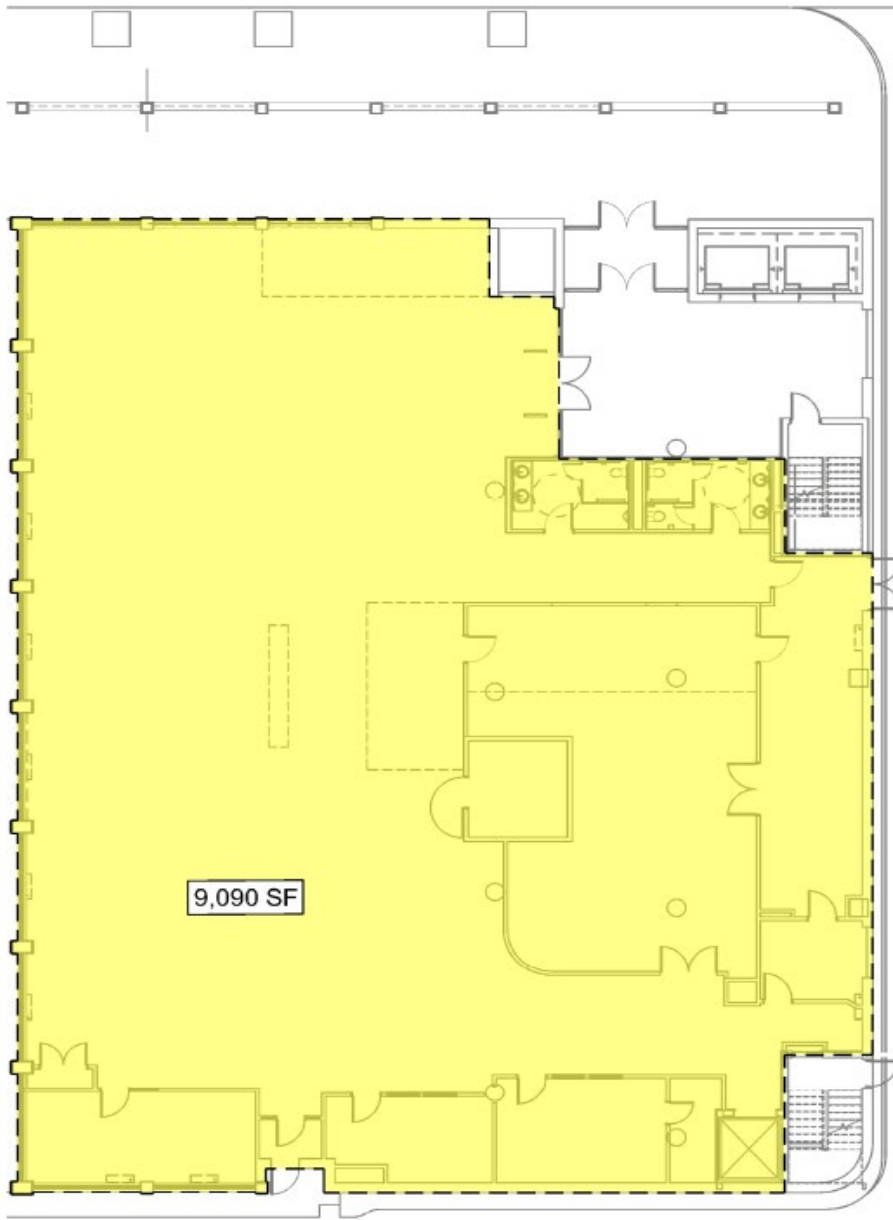
**HENDERSON COMMUNITY COLLEGE
A/T BUILDING - 1ST FLOOR**

Roughly 2,097.4 square feet. Currently using space in the A/T building on the 1st floor. Using rooms 110, 110A, and 110B.



JEFFERSON COMMUNITY & TECHNICAL COLLEGE

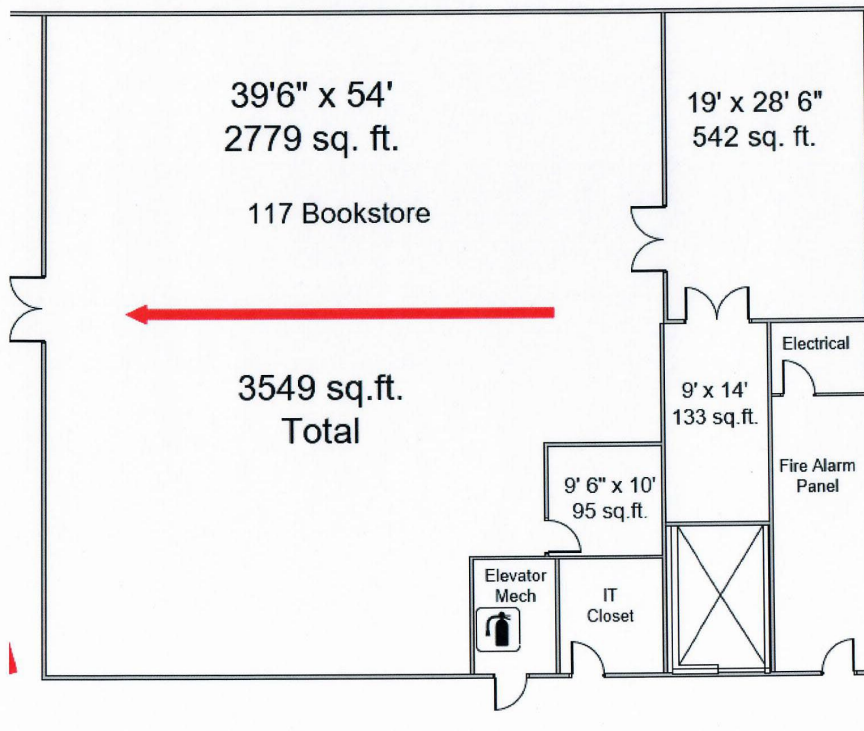
Jefferson occupies 9,090 sq/ft of space in a leased facility for its Downtown Campus bookstore



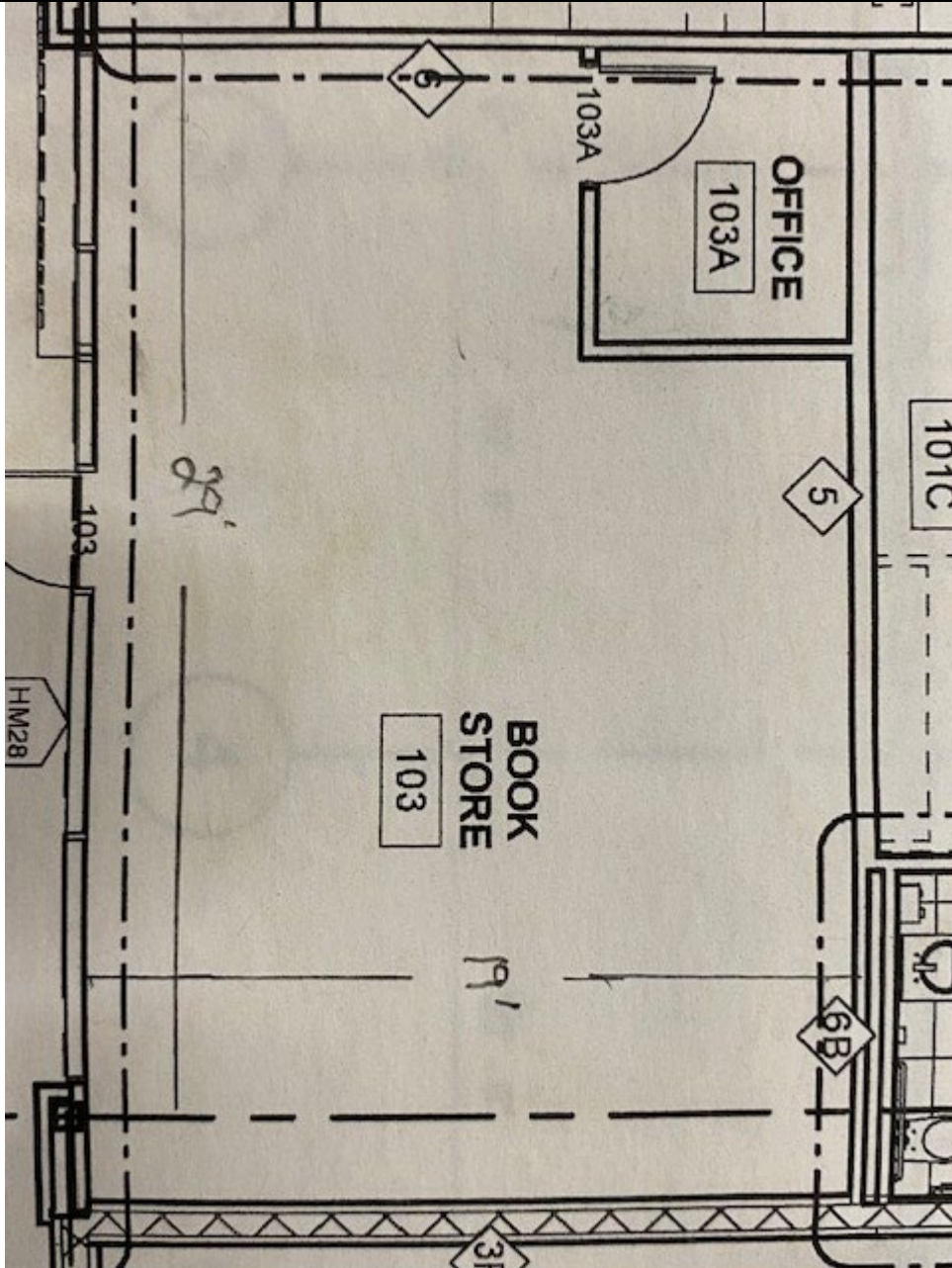
FIRST FLOOR PLAN

SCALE: 1/8" = 1'-0"

MADISONVILLE COMMUNITY COLLEGE

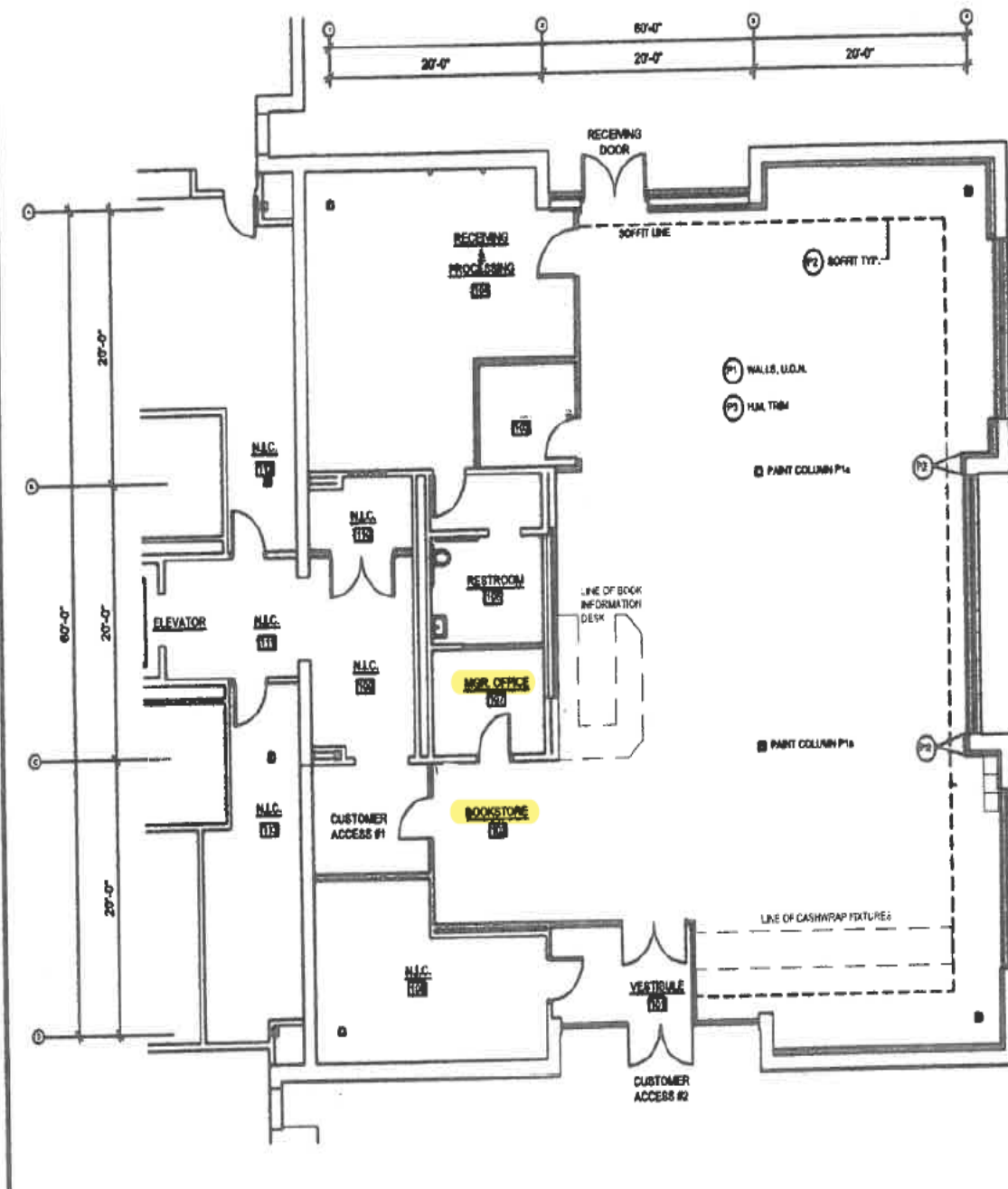


MAYSVILLE COMMUNITY COLLEGE
ROOM 103



OWENSBORO COMMUNITY & TECHNICAL COLLEGE

2,543 sq ft merchandising space and 81 sq ft for Manager Office for 2624 sq ft.

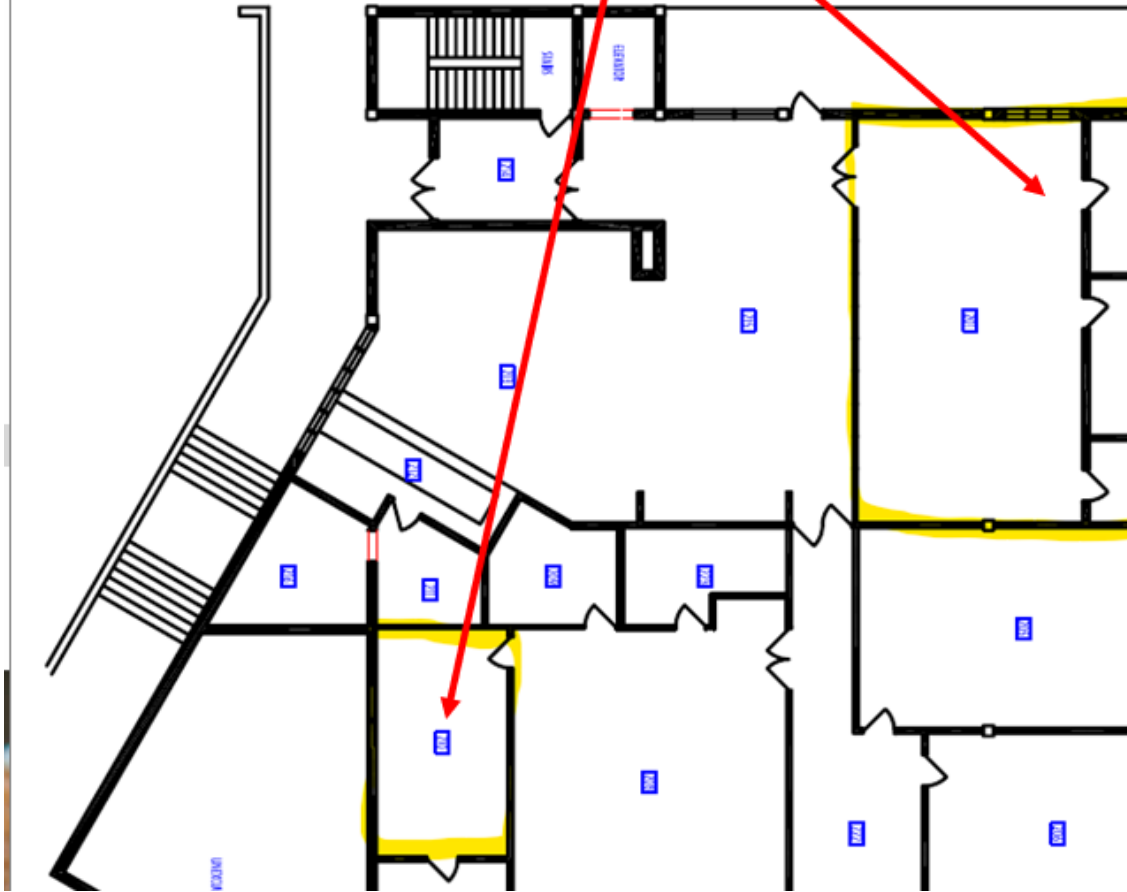


SOUTHEAST KENTUCKY COMMUNITY & TECHNICAL COLLEGE

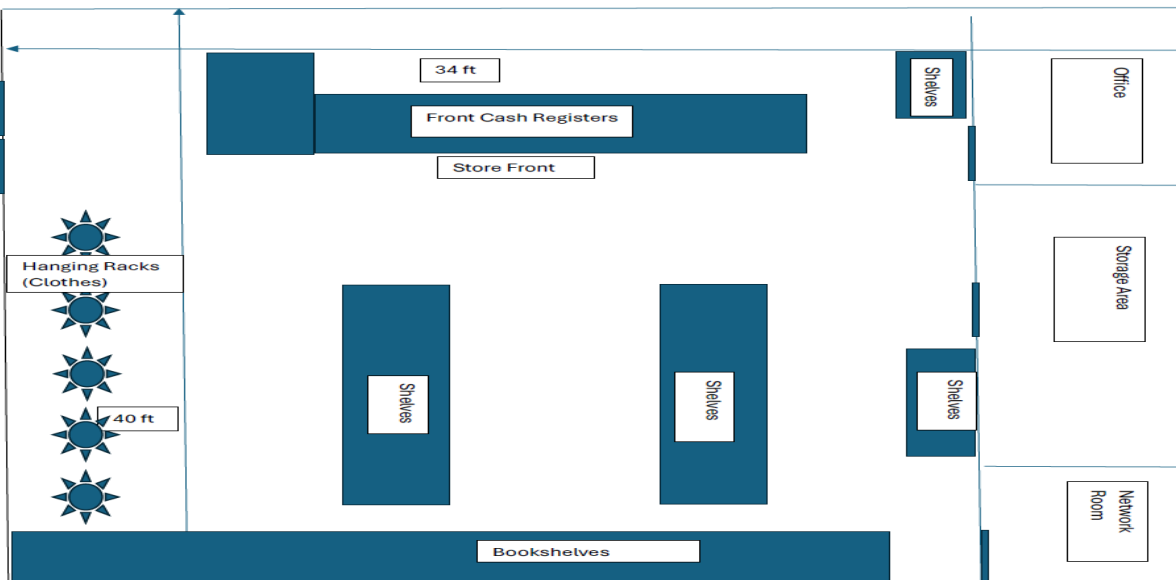
The square footage for the bookstore on Cumberland Campus is 1,360 Feet. There is a large storage area behind the game room and it is about 288 Square feet.

SKCTC B&N Bookstore Falkenstine Hall Room 201

SKCTC B&N Storage Area Falkenstine Hall Room 210



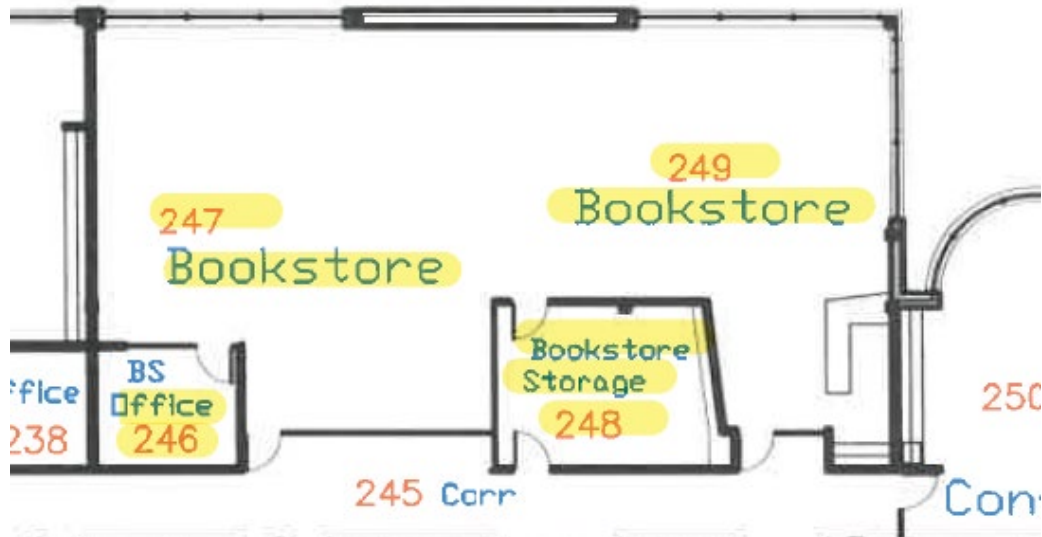
ROOM 201



SOMERSET COMMUNITY COLLEGE

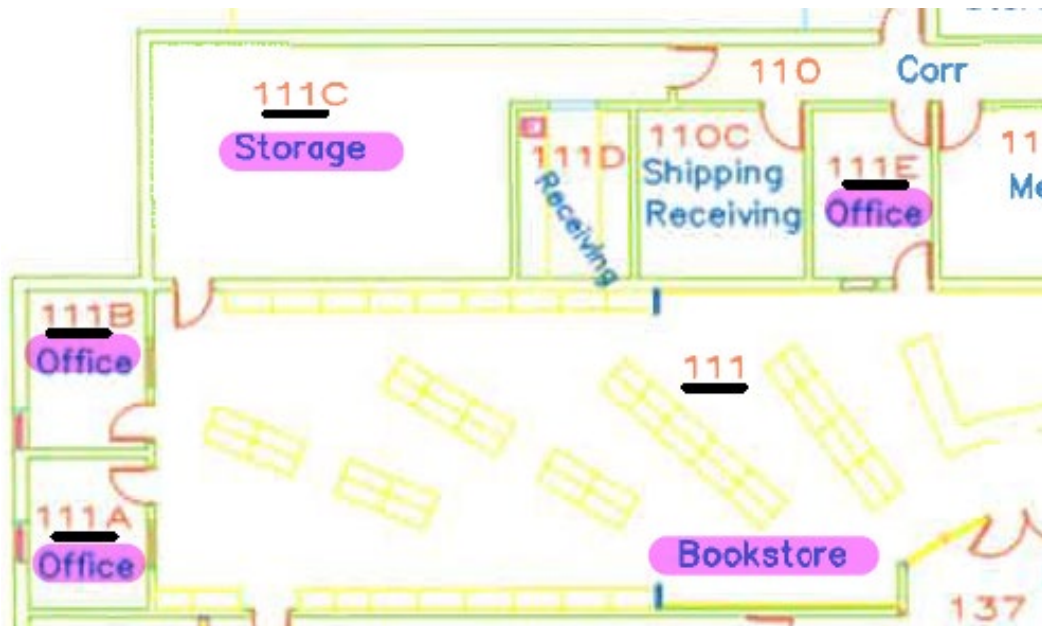
LAUREL NORTH – BUILDING TWO - BLDG #1425, FIRST FLOOR

Bookstore includes rooms 246 (120 sq. ft.), 248 (254 sq. ft.), and 247/249 (1983 sq. ft.) in Building 2 (#1425). The total square footage 2357.



SOMERSET NORTH – HAROLD ROGERS BLDG #1415, FIRST FLOOR

Bookstore is in the Harold Rogers Building (#1415). It includes rooms 111 (2179 sq. ft.), 111A (127 sq. ft.), 111B (133 sq. ft.), 111C (654 sq. ft.), and 111E (144 sq. ft.) for a total of 3237 square feet.



WEST KENTUCKY COMMUNITY & TECHNICAL COLLEGE

BookStore 3144 SqFt

BookStore Office 702 SqFt

ANDERSON

1st floor Evac plan



ROOM 201

